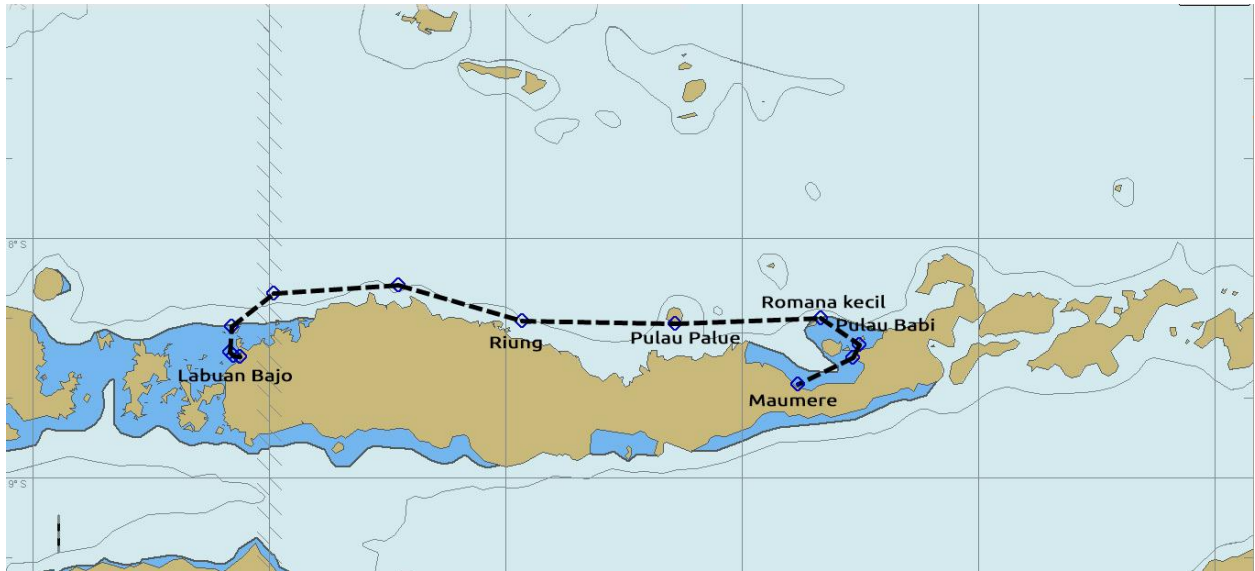


Flores Cruise 4 nights/5 days



Flores is located east of Sumbawa and west of the Solor Archipelago (which includes Adonara, Lembata and Solor) and the Alor Archipelago. To the southeast is Timor. To the south, across the Sumba strait, is Sumba and to the north, beyond the Flores Sea, is Sulawesi. Thee largest town is Maumere.

Flores, the island given a pretty but incongruous Portuguese name by its 16th-century colonists, has become Indonesia's Next Big Thing. The serpentine, 670km Trans-Flores Hwy runs the length of the island, skirting knife-edge ridges, brushing by paddy-fringed villages, and opening up dozens of areas few tourists explore



Day 1

Arrival - Flight to Labuan Bajo / Flores.



We organize the transport from Komodo airport to our vessel "MARI".





After a welcome drink and a brief introduction of your new home for the next days, we will sail you to our first near destination – Angel Island, where we will make a check-up. Overnight we sail east on the north side of Flores and reach Riung Islands at sunrise.

Day 2-4

We offer Up to 4 accompanied dives per day (including one dawn or night dive, if location is suitable).

As a general rule there is no diving on arrival and departure day.

We reserve the right to change the itinerary or specific agreed services, if force majeure, unforeseen or unavoidable circumstances require us to do so.

Some possible destinations on our trip:

Riung,

mostly known as the gateway for the **17 Islands National Park.**

Occupied by a mixture of Bugis, Bajau, Bajwanese and the occasional migrant from Amon, residents here subsist largely from fishing, some farming, and the small-scale tourism that comes here, as well as seaweed farming.



Pulau Palue

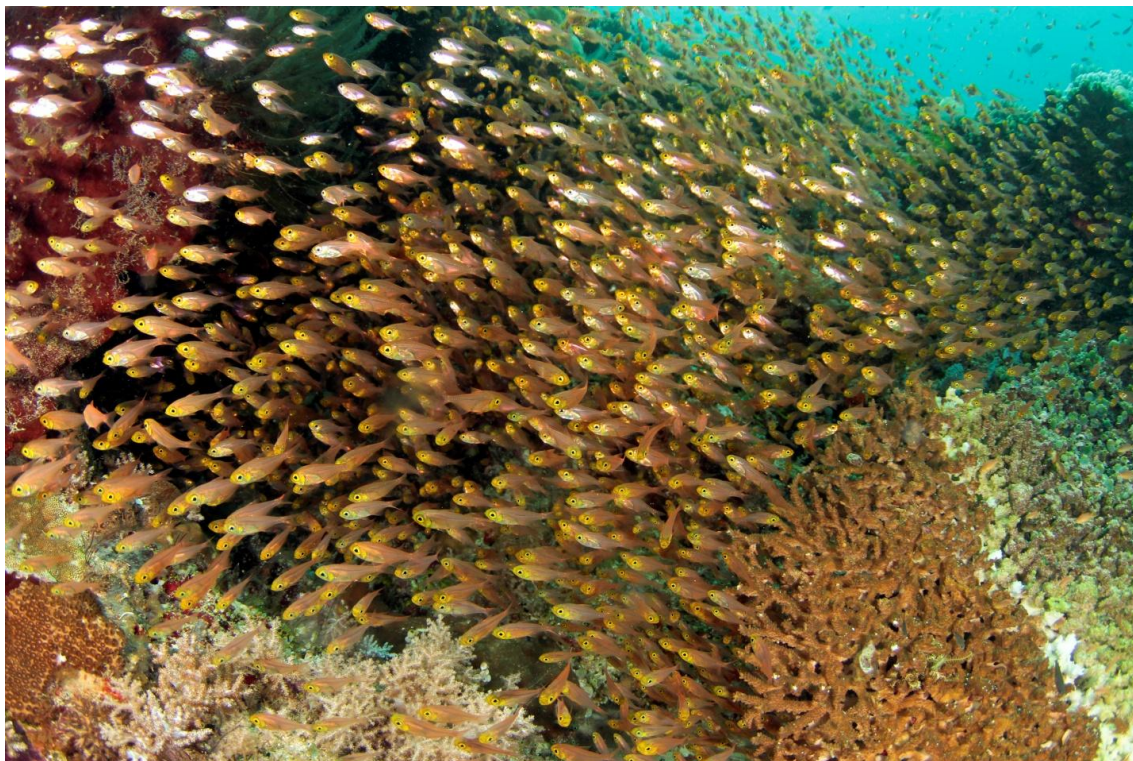
is located north of Flores Island in the Flores Sea. It is part of Lesser Sunda Islands. A word that brings imagination to a series of islands in eastern Indonesia, with the beauty of the landscape and the variety of cultures and exotic traditional traditions.

The image of exoticism on Flores is indeed real. Clean blue sky, dry air that stings the skin, up to the typical topography of the savanna. But on one of the islands, precisely in the north of Ende, the beautiful image of nature in Flores immediately changed grimly. Palue Island, which incidentally is a volcanic island, experienced a disaster in February and August 2013 ago. Mount Rokatenda was inflamed twice at that time. The status of Gunung Rokatenda is set aside after the eruption, requiring residents of Pulau Palue to always be ready to evacuate if at any time Rokatenda throws eruption material



Pulau Kambing (Pemana kecil)

The Pemana islanders mostly originated from Sulawesi (formerly Celebes). Thus the majority of the islands' inhabitants are Muslims. As descendants of the proud seafaring Bugis ancestral line, the islanders still live an ocean-focused life. You will most likely witness their wooden boat-building skills, or you may even get a chance to join them exploring the surroundings and far-flung islands in a Bugis style of traveling.



Pulau Babi

is an island located off the coast of Flores.

Babi is home to many diving sites. One, called The Crack, was formed during the 1992 earthquake. Located in a reef 20 metres (66 ft) below the water, the 70-centimetre (28 in) crack reaches a length of 30 metres (98 ft).

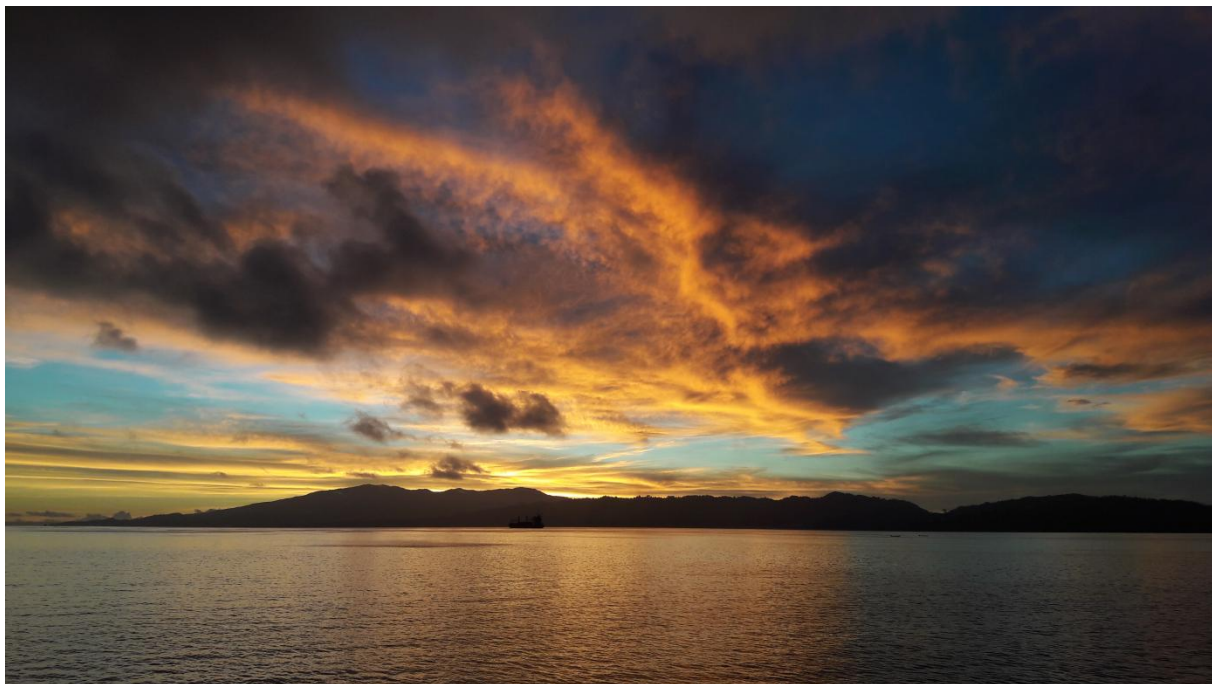
Numerous forms of aquatic life can be found there.



Maumere

is the seat capital of the Sikka Regency and the second largest town in Flores, Indonesia. It lies on the north coast of the island and the port is in the north-west part of the town.

The reefs in areas surrounding Maumere (the Maumere Gulf) were once considered some of the finest diving in the world.



Day 5

Check-out after breakfast or lunch, depending on your return flight time.

We say good-bye to our guests and wish them farewell.

The MARI crew will organize the transfer to the Airport and assist at check-in for onward flights.

